

## Carrier Wireless Service Certification (CWSC) program allows carriers and vendors to independently test and certify devices.

The program utilizes WBA Authorised Test Labs (ATL), working with Members and their partners to simulate end customer usability in a real network environment to ensure that devices are ready for worldwide commercial deployments, reducing customer support time for carriers and time to market for vendors.

### Operators

CWSC allows carriers to test Wi-Fi services end-to-end (from provisioning through to billing) against different equipment and credentials. This removes issues prior to commercial release, ensuring a better customer experience.

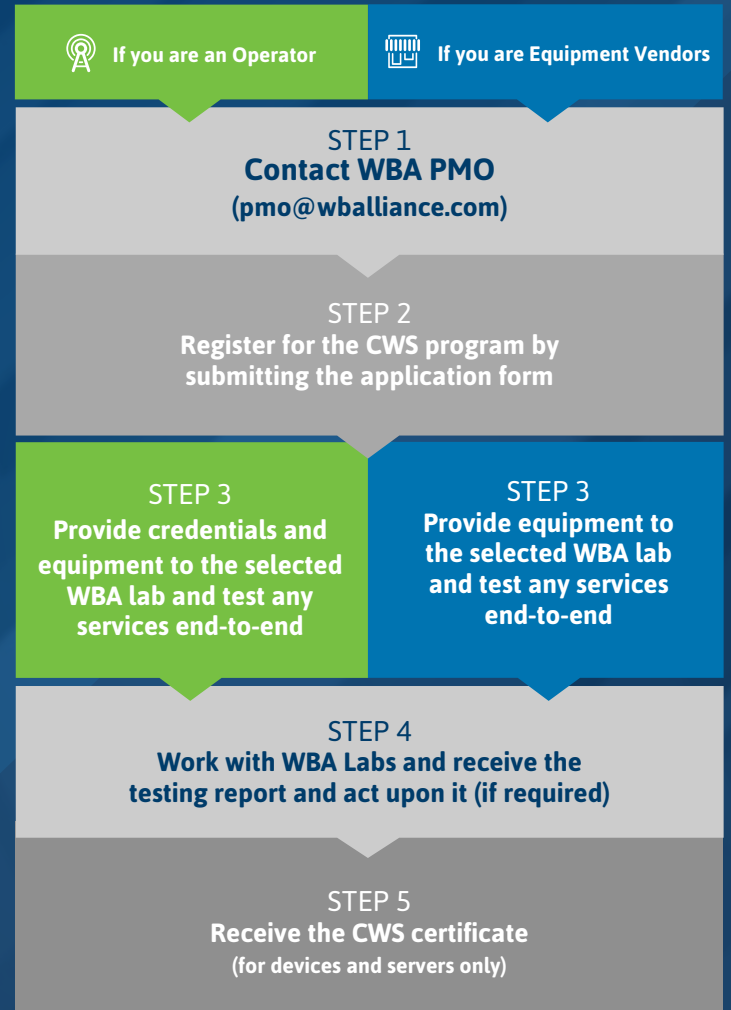
### Vendors

Avoid multiple testing with different carriers, instead testing multiple devices across multiple carrier networks, gaining time to market. Vendors can also gain interoperability Certification to validate carrier's requirements in order to facilitate sales, and save testing resources.

## CARRIER Wi-Fi Services – Certification Available

	WI-FI ROAMING	WI-FI OFFLOAD	AAA SERVER SERVICES	ONLINE SIGN-UP SERVICES
Policy	✓	✓	--	--
AAA / Radius	✓	--	✓	--
Provisioning	✓	--	--	✓
User Experience	✓	--	--	--
Performance	✓	--	--	--

## The Process – How to apply

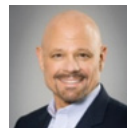


## ATL - Request for Quotation



**Sai Sushma Mallela**

[saisushma.mallela@dekra.com](mailto:saisushma.mallela@dekra.com)



**John Cernazanu**

[j.cernazanu@kyrio.com](mailto:j.cernazanu@kyrio.com)



**Mick Conley**

[mick.conley@ul.com](mailto:mick.conley@ul.com)

To find out more about the CWSC program, please contact the WBA PMO team: [pmo@wballiance.com](mailto:pmo@wballiance.com)  
[www.wballiance.com/certification](http://www.wballiance.com/certification)